

# HENNECKE PRESS RELEASE

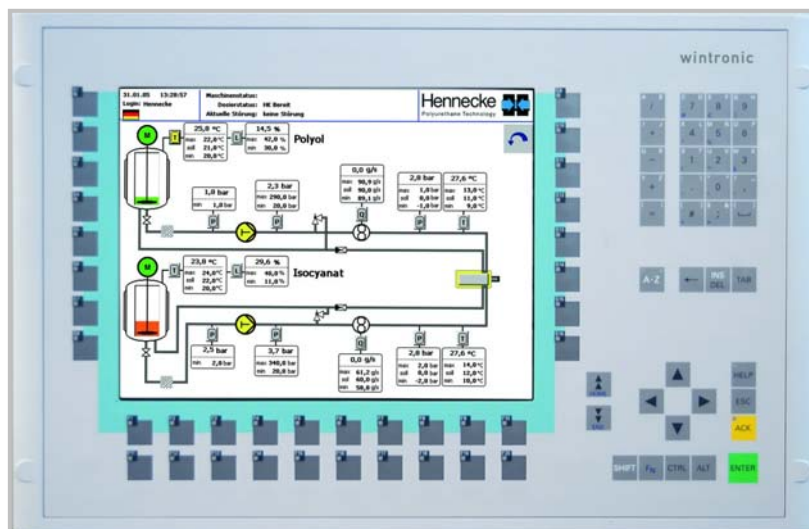
## Wintronic – (r)evolution in user-friendliness

Hennecke's recent TopLine HK generation presents itself with a variety of new developments, with special emphasis being placed on user-friendliness. The innovative control concept "Wintronic" sets a new benchmark in operating comfort.

The term "visualization" generally refers to the display of abstract information with optical means. At Hennecke, it represents the core idea underlying the new configurable control platform Wintronic, based on a Siemens Multipanel. Wintronic incorporates Hennecke know-how in the form of modern control technology. The customer is provided with a system that offers not only extended service functionality and production monitoring features but also active trouble-shooting support and user assistance at the machine.

### Trust is good – control is better

Wintronic provides continuous insight into the current process control – all circuits and sequences can be monitored with a single keystroke. The process diagrams are represented in either concise or detailed form. Three main control screens indicate the current operating status. A status bar remains visible at all times, showing the most important information. Good readability is ensured by a high-resolution graphic display, and the ergonomic key panel design makes operating the machine an easy and convenient task.



Operating the control unit itself has also been made as simple as possible. In consistency with the well-proven control system of the TopLine HK, the panel is based on the same operating logic as the formerly employed OP displays, this way allowing for quick and easy understanding of the machine functions. Additional support during operation is provided by the help functions.

The user will thus be able to efficiently work with the system quite soon after familiarizing himself with the control functions.

Efficiency is a key feature of the multipanel, for instance, when it comes to calculating the pump characteristic curves. In the past, this was done using ordinary graph paper. When equipped with flowmeters, the novel TopLine HK control system performs the calibration automatically after the weight values have been entered. By means of the preset output range the control software calculates the correct reference points, which serve as basis for deriving the pump characteristic curves. This ensures the best possible calibration of the machine with respect to the operating point.

However, Wintronic is not only "interface to the user" – thanks to an on-board Ethernet interface it can be easily integrated into the company network. Moreover, USB and parallel ports allow connection of standard PC peripherals. A card slot for standard compact flash cards is available for easy transfer of recorded process data and machine parameters.

### **Getting a grip on the process**

The acquisition of process data, whether they are directly stored or passed on to the company's quality management system, is also at the heart of a new way of production monitoring and analysis. In the new TopLine HK, all parameters are constantly monitored and recorded. Any pressure or temperature curve can be reproduced and illustrated, usually in only two operating steps. The individual shot data are stored automatically. Not only data which are relevant to production, but also service-related parameters such as operating time counters are included in the storage system, ensuring that the production process remains transparent.

In addition to the recording of process data, Wintronic is capable of intervening in the current production flow. An equipment package with frequency controllers and sensor technology enables active readjustment of the shot parameters or abortion of the entire process in the case of a fault. However, to exclude any follow-up failures, a faulty shot can be avoided from the outset by making use of the simulation mode – a valuable function not only for cost-intensive applications. The requirements are determined by the respective application: Drawing on the assistance functions, the user creates a process-specific tolerance window for the parameters.

### **Hennecke service included**

Together with Wintronic, the customer will receive Hennecke service as an integral part of its scope of supply. The multipanel offers diverse help functions, with a clear indication of faults. The control screen allows for immediate localization of warning messages, and a detailed description is given in a separate pop-up window. In addition to displaying the problem, the control system offers users active support by proposing corresponding solutions. Via a modem, available as an option, this support feature can even be extended: Remote maintenance and fault diagnosis can be performed in real time.

### **Built-in user experience**

Wintronic is but one feature of the new Topline HK. When it comes to the present generation of high-pressure metering machines, Hennecke does not talk about a further development but of a completely revised machine concept which reflects a broad spectrum of user experiences.

Each machine element is designed as an autonomous unit which is set up at the customer's site according to the plug-and-play principle. The new tank station, for instance, comes in the form of a compact module with day tank, heat exchanger, temperature control system and decentralized control unit. This modular system ensures quick start-up, good accessibility and easy conversion or expansion.

Furthermore, the Topline HK can be combined with a variety of add-on and peripheral devices such as the AEROMAT gas-loading unit and can be customized in order to suit the specific application. The pentane version is characterized by a drastically reduced exhaust volume, resulting in a significant decrease in operating costs. The metering station, too, contains a number of novelties such as, for instance, optimized magnetic couplings and vibration-isolated pump tables. Depending on the application, Hennecke fits the Topline HK with mixheads of the MX, MQ, ML and MN series.

**For further information, please contact:**

Thomas Kirsten  
Marketing Communication Manager  
Tel. + 49 2241 339-297  
Fax. + 49 2241 339-974  
Email: [thomas.kirsten.tk@hennecke.com](mailto:thomas.kirsten.tk@hennecke.com)

**Hennecke**   
Polyurethane Technology

Hennecke GmbH  
Polyurethane Technology  
Birlinghovener Str. 30  
D – 53754 Sankt Augustin

 Bayer MaterialScience Company